



The Historical Herald

Cottage Renovation Update

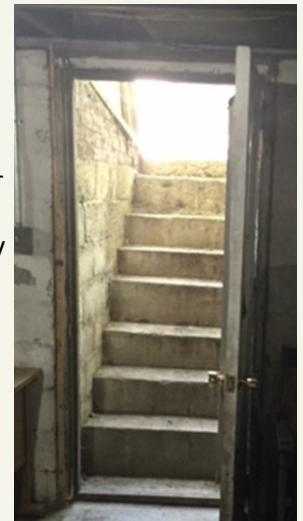


This past summer the Bexley Historical Society contracted with Ritchey Construction, Inc., for several repairs and renovation projects to the cottage. They cut back the rafter tails, which unfortunately had rotted beyond repair. They also glazed and painted the outside of the windows on the sunporch, the

Door and some exposed wood. The front porch and door overhang received some much needed attention with primer and paint. Ritchey Construction carefully matched the exterior paint color to preserve the historical character of the building.



With these repairs completed, the Society now turns to the next Wish List item in need of repair: the unsafe basement steps. To reach the steps, heavy wooden cellar doors must first be lifted, there is no railing and the steps themselves are both shallow and steep with an uneven rise between them. Bexley Historical Society considers this a high priority project.



INSIDE THIS ISSUE:

Photo Displays	2
Tom & Mary Jane Bolon Interview	2
Membership Information	2
Volunteers	3
Billy Cohen Interview	3
Bexley Floral Company	4
Bexley Historical Society Information	4

Bexley Historical Society Logo



The Bexley Historical Society recently debuted a new logo based on the iconic Drexel Circle. Edie Mae Herrel, at the request of the Board, created the logo's concept which depicts features found at Drexel Circle. Shown is the **boulder** that honors Camp Bushnell, which covered several acres in the area and served as a mustering camp for soldiers preparing for the Spanish-American War; the

obelisk honoring World War II veterans from Bexley; a **tree** to symbolize our Arboretum City; **flowers** that decorate the circle with color every year; and an **American Flag** extended past the drawn oval to celebrate all those from Bexley who go beyond our boundaries and participate in meaningful ways in the greater community. The **White** background with a **Blue** accent represents Bexley's colors.

Photo Displays

The Bexley Historical Society currently has displays at both the Jeffrey Mansion and the newly opened Giant Eagle Market District Express. The Jeffrey Mansion photo/art exhibit features homes and businesses.

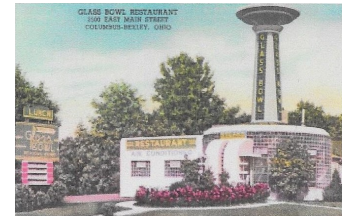


Holtzman Home
South Parkview Avenue
Edie Mae Herrel, Artist

This past summer the Giant Eagle Corporate Headquarters in Pittsburgh contracted the Bexley Historical Society with an inquiry about Bexley businesses from years past. The society provided 30+ photos along with a brief history of each from which selections were made as to the ones the store's artist would interpret for display. The framed art work can be seen in the northeast entrance area and also on the east wall adjacent to the check-out facilities.



Accurate Oil Company
E. Main St. & Parkview Ave.
circa 1925



Glass Bowl Restaurant
E. Main St. at Cassingham
1938-1968

Tom and Mary Jane Dawes Bolon Interview



Tom Bolon graduated from Bexley High School and **Mary Jane Dawes** from CSG. Tom's three older brothers were also Bexley High grads. Both Tom and brother Gordon were lawyers, "Bud" was a doctor, and David, a ceramist engineer. Tom graduated from Lafayette College and then entered military service. He and Mary Jane met on a blind date. In 1961, he began law school at Ohio State and then spent most of his career in private practice. Mary Jane's Dawes Family ancestors established the Dawes Arboretum with the initial purchase of 150 acres of land. The arboretum now covers 1,800+ acres. For many years, she

chaired the arboretum board and still remains active in the facility.

Mary Jane said that one of the several goals of the arboretum is to educate young people in the preservation of nature.

The Bolon's three children, Tim, David and Sarah, grew up learning the four R's of Living: Respect, Responsibility, Rational Reasoning, and Reverence to a Greater Power.

Tom and Mary Jane look upon Bexley as an exceptional, eclectic community — one they are happy to call 'Home'.

Bexley Historical Society Membership

Lori Ann Feibel, long-time Membership Chairman for Bexley Historical Society, recently found it necessary to relinquish that position. Her duties with Bexley City Council have increased to the point she needed to lessen her historical society volunteerism. The society's board reluctantly accepted her decision.

Your continued support of the society through your membership is

much appreciated. To quote Lori Ann, "These memberships are the income vital to the organization as they provide the necessary funds to record and celebrate our city's great history." Your membership has helped the society in many ways such as: assemble the photo display at Jeffrey Mansion, expand the displays at the museum and publish the newsletters.

Enclosed with this newsletter is a 2017 membership form along with an

addressed envelope for your use. If you would prefer to receive future newsletters by email, please include that address. If you have questions about your membership, please contact the historical society at 614.559.4360.

Again, the Bexley Historical Society thanks you for your continued support.



Historical Society Volunteers



Sheree Lamendola, volunteer, and
Connie Ostrove, Bexley Historical
Society Board member

Sheree Lamendola, her husband and two children moved to Bexley a year and a half ago. She is originally from TX and holds a law degree from the University of Houston. Sheree has a love of history and has done historical research. At the historical society, she organized audio tapes of interviews

the society undertook in the 1970s. These tapes are in the process of being downloaded into the society's computer. Her next project is the office files. Sheree stated, "Understanding where you live makes life more interesting."

Alex Mathews, a graduate of Pickerington North High School, is a soon-to-be junior at Capital University where his majors are Economics, History and Political Science. Alex has been volunteering at the historical society since this past summer.

His work for the society varies widely. He has done research, made appointments and sought out contacts, and has worked closely with Edie Herrel to organize and streamline the society's collection of data for a book about the many people who have called Bexley 'home'. Alex is also digitizing the audio tapes that volunteer Sheree Lamendola organized.



Debbie Maynard, Mayor Kessler's
assistant, and **Alex Mathews**
with photos of past Bexley officials

Alex said, "Bexley is such a unique community to me in how entire generations of families have grown up here. The diversity is also impressive. Since starting at Capital, I've moved into an apartment on Sheridan Avenue and have welcomed Bexley as my new home. I look forward to working more with the society."

Interview with Billy Cohen



Billy Cohen
1966 graduate
Bexley High School

William "Billy" David Cohen has fond memories of Bexley where with his parents, Arthur and Beatrice, and his siblings, Bob and Marian, Billy experienced a safe, secure environment, received a wonderful education and did not experience any feelings of prejudice or discrimination. Billy majored in journalism at Northwestern University, graduating in 1970. During his college years, he took an active part in protesting the Viet Nam War, and he also did some folk singing in coffee houses. After returning to Columbus, he eventually was hired part-time as a news editor at WOSU public radio. This job was a stepping-stone to other positions at the radio station and in 1975, he was named the State House reporter. Billy spent 42 years in public radio, retiring three years ago. He loved covering issues and presenting all sides so the public could make their own decisions. He felt it vital that his reporting be impartial. His reputation reflects this in that he was respected and thought of as fair to all points of view.

Billy met his wife, Randi Sue Weisberger, in the Clintonville area where they both lived. Randi, from Maine, was working on her Ph.D. at Ohio State in foreign language education. They married in 1985. Randi also received a Master in counseling and was in private practice for a number of years. She and Billy have a daughter, Hannah, who lives in Havana, Cuba and works as a tour guide. She has started to do some reporting and as Billy said, has even had a by-line in the N.Y. Times.

In retirement, Billy does many small concerts throughout the area. The concerts are theme based, mostly presenting folk music. To Billy, music evokes memories and touches our hearts.

Bexley Historical Society
P.O. Box 9285
Bexley, OH 43209



Bexley Historical Society Museum
at the
Jeffrey Estate Caretaker's Cottage

Bexley Historical Society
2080 Clifton Avenue / Bexley, OH 43209

Hours

First Thursday of Each Month

10:00 a.m. to 2 p.m.

Second Monday of Each Month

5:30 p.m. to 7:00 p.m.

First Sunday of Each Month March -

October

1:00 p.m. to 3:00 p.m.

Also Open By Appointment

614-559-4360

info@bexleyhistory.org
www.bexleyhistory.org
501 (c) (3) Organization

Officers

President: Michael Kilbourne **Treasurer:** Scott McKinley
Vice-president: Dr. Walter Buchsieb **Secretary:** Glenn Soden

Trustees

**Stephen Brubaker, Mark Epstein, Glenn Estapa, Amy Goldstein,
David Madison, Connie Ostrove, Scott McKinley, Stanley Yenkin**

Advisors: Ed Hamblin, Edie Mae Herrel / **Founder & Museum Director**
Ex-Officio: Cindy Lindsay, Bexley Public Library

Bexley Historical Society and Bexley Recreation & Parks Dept.
Annual Pancake Breakfast at Jeffrey Mansion, 165 N. Parkview Ave.
Pancakes, Sausage, Juice, Coffee

Saturday, December 10, 2016 8:30 a.m. – 11:30 a.m.

Adults - \$6.00 Children 11 & under - \$4.00

Entertainment!

Bexley Elementary School Choir

Ray Pauken & Friends

Frosty the Snowman



A Bit Of Bexley History – The Bexley Floral Company

The Bexley Floral Company was located on Pleasant Ridge Avenue from 1915-1961. The Capuano Family began their business with the raising of produce for Central Market, which was in the downtown area of Columbus. The brothers, John and Henry Capuano, then moved into the wholesale flower business. At one time, there were at least 18 greenhouses at the Pleasant Ridge site, and the business held the distinction of being one of the largest cyclamen plant growers

In the United States. During World War II, the federal government asked the family to grow vegetables. They became a prime supplier of tomatoes for the Big Bear Grocery Stores.

A side note: The Big Bear Supermarket Chain was founded in Columbus in 1933. This marked the beginning of self-service supermarkets in the Midwest. After 75+ years, Big Bear grocery stores closed.



Floral Show, OH State Fairgrounds, c.1930s
Bexley Floral Company display